

INGERSOLL-RAND[®]

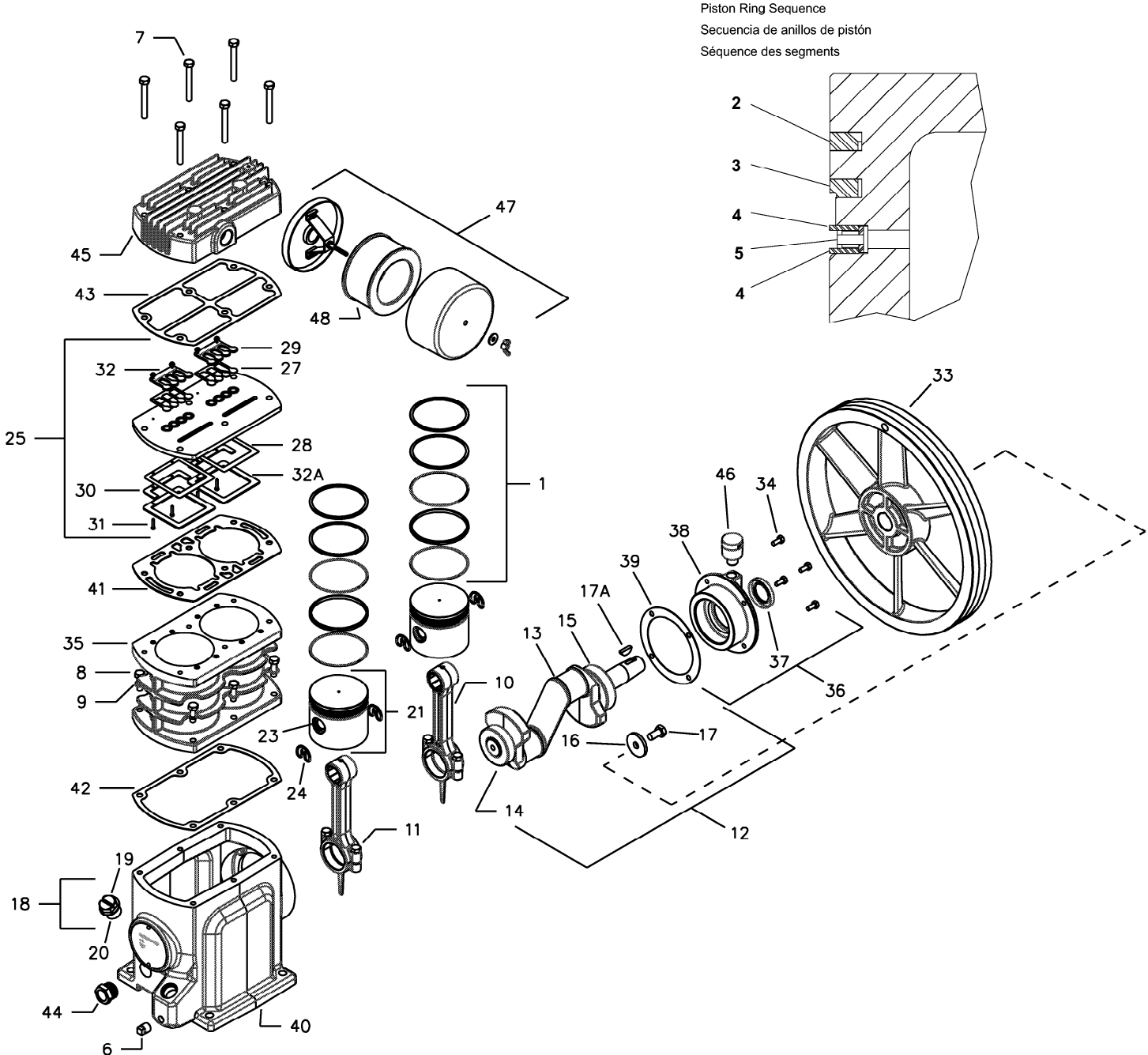
AIR COMPRESSORS

Ingersoll-Rand Company
 800-B Beatty Street
 P. O. Box 1803
 Davidson, NC 28036
 1-800 AIR SERV
 www.air.ingersoll-rand.com

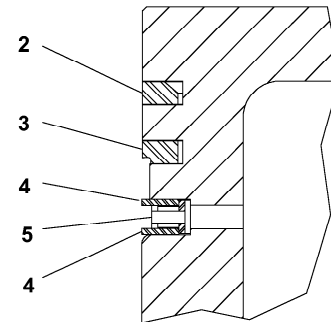
PARTS LIST FOR MODEL SS5 BARE COMPRESSOR PUMP

LISTA DE PIEZAS PARA MODELO SS5 BOMBA COMPRESORA SIN ACCESORIOS

LISTE DE PIÈCES POUR COMPRESSEUR NU, MODÈLE SS5



Piston Ring Sequence
 Secuencia de anillos de pistón
 Séquence des segments



REF. NO. N° DE REF. N° DE REP.	PART NO. N° DE PIEZA N° DE PIÈCE	DESCRIPTION	DESCRIPCIÓN	DESCRIPTION	QTY. CANT. QTÉ.	
	REF. 97334148	PUMP, BARE COMPRESSOR	BOMBA COMPRESORA SIN ACCESORIOS	COMPRESSEUR NU	—	
<input checked="" type="checkbox"/>	1	20102703	SET, PISTON RING	CONJUNTO DE ANILLOS DE PISTÓN	JEU DE SEGMENTS	2
	2	NSS	● RING, COMPRESSION	● ANILLO DE COMPRESIÓN	● SEGMENT DE COMPRESSION	1
	3	NSS	● RING, SCRAPER	● ANILLO RASCADOR	● SEGMENT RACLEUR À ÉPAULEMENT	1
	4	NSS	● RING, OIL CONTROL SPACER	● ANILLO ESPACIADOR REGULADOR DE ACEITE	● SEGMENT D'ESPACEMENT	2
	5	NSS	● RING, OIL CONTROL	● ANILLO REGULADOR DE ACEITE	● SEGMENT RACLEUR À FENTES	1
	6	95033593	PLUG, OIL DRAIN	TAPÓN ROSCADO DE PURGA DEL ACEITE	BOUCHON DE VIDANGE D'HUILE	1
	7	96706874	CAPSCREW, M8 X 65 (HEAD BOLT)	TORNILLO DE CABEZA, M8 X 55 (PERNO DE CULATA)	VIS D'ASSEMBLAGE, M8 X 55 (BOULON DE CULASSE)	6
	8	96702253	CAPSCREW, M8 X 25 (CYLINDER BOLT)	TORNILLO DE CABEZA, M8 X 20 (PERNO DE CILINDRO)	VIS D'ASSEMBLAGE, M8 X 20 (BOULON DE CYLINDRE)	6
	9	96728316	WASHER, SPRING — M8	ARANDELA DE MUELLE	RONDELLE À RESSORT M8	6
	10	97333173	ASSEMBLY, CONNECTING ROD	CONJUNTO DE BIELA	BIELLE	2
	11	96705876	● CAPSCREW, M8 X 35	● TORNILLO DE CABEZA, M6 X 25	● VIS D'ASSEMBLAGE M6 X 25	2
	12	20102711	ASSEMBLY, CRANKSHAFT — SERVICE	CONJUNTO DE CIGÜEÑAL, SERVICIO	ENSEMBLE DE VILEBREQUIN	1
	13	NSS	● CRANKSHAFT	● CIGÜEÑAL	● VILEBREQUIN	1
	14	NSS	● BEARING, MAIN	● COJINETE PRINCIPAL	● PALIER PRINCIPAL	1
	15	NSS	● BEARING, BALL	● COJINETE DE BOLAS	● PALIER À BILLES	1
	16	54423504	● WASHER	● ARANDELA, M8	● RONDELLE M8	1
	17	96730437	● CAPSCREW, M8 X 20 — LEFT HAND THREAD	● TORNILLO DE CABEZA, M8 X 14 — ROSCA IZQUIERDA	● VIS D'ASSEMBLAGE M8 X 14 FILETÉE À GAUCHE	1
	17A	95245494	● KEY, WOODRUFF	● CHAVETA DE MEDIA LUNA	● CLAVETTE WOODRUFF	
	18	97334254	ASSEMBLY, OIL FILL PLUG	CONJUNTO DE TAPÓN ROSCADO PARA RELLENO DE LUBRICANTE	ENSEMBLE DE BOUCHON DE REMPLISSAGE D'HUILE	1
	19	NSS	● PLUG, OIL FILL	● TAPÓN ROSCADO PARA RELLENO DE LUBRICANTE	● BOUCHON DE REMPLISSAGE D'HUILE	1
	20	97334288	● O-RING, OIL FILL PLUG	● JUNTA TÓRICA, TAPÓN ROSCADO PARA RELLENO DE LUBRICANTE	● JOINT TORIQUE DE BOUCHON DE REMPLISSAGE D'HUILE	1
	21	97333389	ASSEMBLY, PISTON & PIN	CONJUNTO DE PISTÓN Y PASADOR	ENSEMBLE DE PISTON ET AXE	2
	22	NSS	● PISTON	● PISTÓN	● PISTON	1
	23	NSS	● PIN, PISTON	● PASADOR DE PISTÓN	● AXE DE PISTON	1
	24	NSS	● RING, LOCK	● ANILLO DE FIJACIÓN	● CIRCLIP	2
<input type="checkbox"/>	25	97335061	ASSEMBLY, VALVE	CONJUNTO DE VÁLVULA	CLAPET	1
	26	NSS	● PLATE, VALVE	● PLATILLO DE VÁLVULA	● PLAQUE DE CLAPET	1
	27	NSS	● VALVE, DISCHARGE	● VÁLVULA DE DESCARGA	● CLAPET DE REFOULEMENT	2
	28	NSS	● VALVE, INLET	● VÁLVULA DE ADMISIÓN	● CLAPET D'ASPIRATION	2
	29	NSS	● STOP, DISCHARGE	● DETENEDOR DE DESCARGA	● BUTÉE DE REFOULEMENT	2
	30	NSS	● RETAINER, INLET	● RETÉN, ADMISIÓN	● VOLET DE RETENUE D'ASPIRATION	2
	31	NSS	● SCREW, HEX HEAD — M3 X 16	● TORNILLO DE CABEZA HEXAGONAL — M3 X 16	● VIS À TÊTE HEX. M3 X 16	4
	32	NSS	● NUT, HEX — M3 W/LOCKWASHER	● TUERCA HEXAGONAL — M3 C/ARANDELA DE BLOQUEO	● ÉCROU HEX. M3 AVEC RONDELLE DE BLOCAGE	4
	32A	NSS	● STOP, INLET	● DETENEDOR DE ADMISIÓN	● BUTÉE D'ASPIRATION	2
	33	97335756	BELT WHEEL	RUEDA DE POLEA	VOLANT D'ENTRAÎNEMENT	1
	34	97330500	CAPSCREW, M6 X 14 (END COVER BOLTS)	TORNILLO DE CABEZA, M6 X 14 (PERNOS DE TAPA EXTREMA)	VIS D'ASSEMBLAGE M6 X 14 (BOULON DE CARTER)	4
	35	97333488	CYLINDER	CILINDRO	CYLINDRE	1
	36	20102729	ASSEMBLY, END COVER — SERVICE	CONJUNTO DE TAPA EXTREMA — SERVICIO	ENSEMBLE DE CARTER	1
	37	97335624	● SEAL, SHAFT	● OBTURADOR PARA EJES	● JOINT D'ARBRE	1
	38	NSS	● COVER, END	● TAPA EXTREMA	● CARTER	1
	39	97333843	● GASKET, END COVER	● EMPAQUETADURA, TAPA DE EXTREMA	● JOINT DE CARTER	1
	40	97334171	FRAME, COMPRESSOR	BATIENTE, COMPRESOR	CHÂSSIS DE COMPRESSEUR	1
<input type="checkbox"/>	41	54429600	GASKET, VALVE PLATE	EMPAQUETADURA, PLATILLO DE VÁLVULA	JOINT DE PLAQUE DE CLAPET	1
<input checked="" type="checkbox"/>	42	97333546	GASKET, CYLINDER	EMPAQUETADURA, CILINDRO	JOINT DE CYLINDRE	1
<input type="checkbox"/>	43	54410667	GASKET, HEAD	EMPAQUETADURA DE CULATA	JOINT DE CULASSE	1
	44	97334270	GLASS, SIGHT	VISOR DE NIVEL	VISEUR	1
	45	54410683	HEAD	CULATA	CULASSE	1
	46	70243936	ASSEMBLY, VENT	CONJUNTO DE PURGA	ENSEMBLE D'ÉVENT	1
	47	54406640	FILTER, INLET	FILTRO DE ENTRADA	FILTRE D'ASPIRATION	1
	48	32170979	● ELEMENT, FILTER	● ELEMENTO DEL FILTRO	● ÉLÉMENT FILTRANT	1

NSS NOT SOLD SEPARATELY
NO SE VENDE POR SEPARADO
NON VENDU SÉPARÉMENT

AVAILABLE INDIVIDUALLY OR IN VALVE KIT 20100277
DISPONIBLE INDIVIDUALMENTE O EN CONJUNTO DE VÁLVULA 20100277
VENDU SÉPARÉMENT OU DANS L'ENSEMBLE DE CLAPETS 20100277

AVAILABLE INDIVIDUALLY OR IN PISTON RING KIT 20100285
DISPONIBLE INDIVIDUALMENTE O EN CONJUNTO DE ANILLOS DE PISTÓN 20100285
VENDU SÉPARÉMENT OU DANS L'ENSEMBLE DE SEGMENTS 20100285

GENERAL

This publication provides instructions and details for installing a replacement valve plate assembly on a SS5 or SS10 bare pump.

PARTS LIST

	<p>Bolts (27 ft. lbs.) 1-4 M8 X 65mm 96729348</p> <p>Head</p> <p>1-2 Gasket Head 54571617</p> <p>1-1 Ass'y Valve Plate 54701081</p> <p>1-3 Gasket, Valve Plate 54429600</p>	<div style="text-align: center; border: 1px solid black; padding: 5px;">WARNING</div> <p>HAZARDOUS VOLTAGE AND HIGH PRESSURE AIR. Can cause serious injury or death. Disconnect power and bleed pressure from the tank before servicing.</p> <p>HEAD AND VALVE REMOVAL:</p> <ol style="list-style-type: none"> 1. Remove the inlet filter assembly from the head. 2. Ensure all air pressure has been released from the compressor before disconnecting any tube connections or loosening the head screws. Disconnect all tubing attached to the air head assembly. 3. Remove the air head capscrews and discard. Carefully lift the head and then the valve assembly off the cylinder. 4. Observe the assembly direction of the valve plate before removing from the air head. Make note of this direction in order to reassemble the air head and new valve assembly to the cylinder. 5. Remove the valve plate gasket from the cylinder. Remove the head gasket from the head. If scrapping is necessary, do so lightly to prevent marring or scratching the sealing surface.
--	--	---

REF. NO.	PART NUMBER	DESCRIPTION	SS5 QTY	SS10 QTY
1-1	54701081	VALVE PLATE ASSY	1	2
1-2	54571617	GASKET, HEAD	1	2
1-3	54429600	GASKET, VALVE PLATE/CYLINDER	1	2
1-4	96729348	BOLT, M8X65MM	6	12

NOTICE:

There has been a design change on the head capscrews, torque values and torquing sequence for the SS5 and SS10 bare. The capscrew strength has been increased to 10.9 allowing for higher torque (27 Ft lbs – 36.6 N-M). This kit includes new grade 10.9 capcrews to permit upgrading to the new design.

SPECIAL NOTICE:

There has been a design change on the SS5 and SS10 valve plate. Early valve plate components were assembled with M3 diameter hardware. Current valve plate components are assembled using M4 diameter hardware. This valve plate will not fit the cylinder of those units originally supplied with an M3 valve plate.

If your unit has a cylinder designed for M3 valve plates you will need to modify it before installing the new M4 valve plate. It will be necessary to perform a simple inspection to determine which cylinder you have.

<p>INSPECTION:</p> <ol style="list-style-type: none"> 1. Locate the (4) valve hardware relief holes on top of the cylinder. 2. Measure the diameter of the relief holes. .281 inches = M3 .315 inches = M4 <div style="text-align: center; margin-top: 10px;"> <p>VALVE HARDWARE RELIEF HOLES</p> </div>	<p>MODIFICATION:</p> <ol style="list-style-type: none"> 1. Mask the cylinder bores and the head bolt holes to prevent metal chips from entering. 2. Using a suitable tool (bit, reamer, grinder, etc.), carefully enlarge the diameter of the holes to .315 inches and increase the depth to .22 inches. Be sure to deburr all sharp edges. 3. Check for interference by trial fitting the new valve plate assy. <div style="text-align: center; margin-top: 10px;"> </div>
---	---

VALVE AND HEAD INSTALLATION:

1. Position a new valve gasket on the cylinder.
2. Carefully install the valve plate on the cylinder with the discharge side facing up.
3. Align the new head gasket on the valve assembly.
4. Carefully install the head on the valve plate.
5. Install the new capscrews finger tight. Cold torque in three –step process, using prescribed criss-cross pattern as shown. Snug capscrews using 15 Ft Lb (20.3N-M) torque setting, Full torque to 27 Ft-Lbs (36.6 N-M). Repeat 27 Ft-Lbs (36.6 N-M) torque.
6. After reassembly and testing for leaks, retorque head capscrews to 27 Ft-Lbs (36.6 N-M) using the prescribed criss-cross pattern. Do this while the compressor is still hot (hot torque).