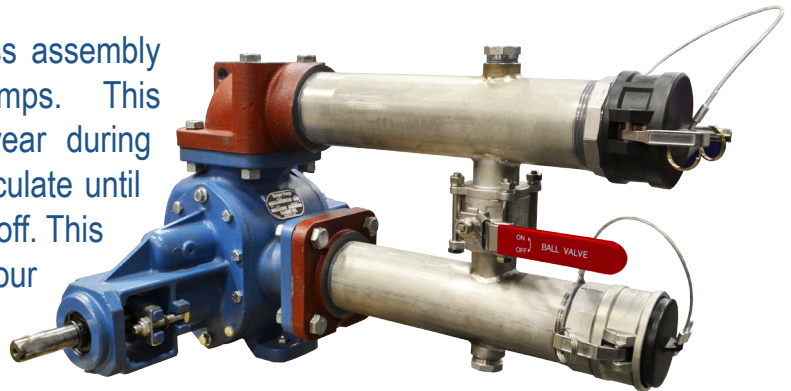


NEW PRODUCT INTRODUCTION

TGBP10003

TankGuard® now offers a 3" pump bypass assembly compatible with Ranger and Roper Pumps. This bypass is designed to reduce pump wear during product loading by allowing product to circulate until the trailer offloading access can be turned off. This added safety device will help protect your equipment from potential downstream shut downs and preserve the life of your pump.



Features

- Carbon steel direct mount flanges compatible with Ranger and Roper Pumps
- SS316 stainless steel product fittings for long lasting service
- SS316 3 piece ball valve (PTFE seals) for easy rebuilding
- SS316 3" standard male and female camlock with tethered poly cap and plug
- Two 1" ports on the top and bottom

Ordering Information

Assembly Part Number	Description
TGBP10003	3" Roper Pump Bypass Assembly

Available nationwide at Polar Service Centers!